

UCG22-12

12V 22AH

Deep Cycle

Ultracell®
Quality in Every Lithium-Ion

UCG22-12



Specificatii fizice

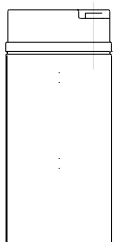
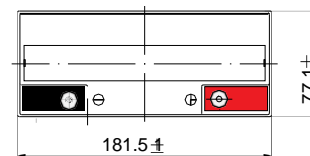
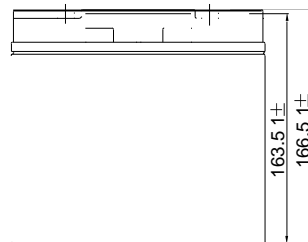
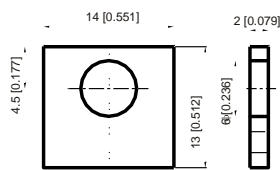
Model	UCG22-12
Lungime	181.5 ± 2 mm
Latime	77 ± 2 mm
Inaltime container	168.0 ± 2 mm
Inaltime totala (cu borne)	168.0 ± 2 mm
Greutate aproximativa	6.20 kg

Specificatii

	Tensiune nominala	12V
	Capacitate nominal (C10h)	22AH
Tip borne	Borne standard	F3
Material container	Optiune standard	ABS
Capacitate nominala	20hr, 1.80V/cell, 25°C	22.85AH/1.1AH
	10hr, 1.80V/cell, 25°C	22AH/2.06A
	5hr, 1.75V/cell, 25°C	18.0AH/3.6A
	3hr, 1.75V/cell, 25°C	16.32AH/5.44A
	1hr, 1.60V/cell, 25°C	13.3AH/13.3A
Curent maxim de descarcare	300A (5s)	
Rezistenta internă	Aprox 15.0m Ω	
Caracteristici de descarcare	Plaja de functionare temperaturi	Discharge: -15 ~ 50°C
		Charge: 0 ~ 40°C
		Storage: -15 ~ 40°C
Temperatura nominal de functionare	Utilizare ciclica	25 ± 3°C
		Curent initial de incarcare < 6.0A. Tensiune 14.4V ~ 15.0V Coeficient temperatura -30mV/°C
		Utilizare stand-by
Durata de viata proiectata in floating la temperature de 20°C	Capacitate in functie de temperatura	40°C 103%
		25°C 100%
		0°C 86%
Autodescercare	Bateriile Ultracell pot fi păstrate timp de până la 6 luni la 25 ° C și apoi este necesară o încărcare de reîmprospătare. Pentru temperaturi mai mari, intervalul de timp va fi mai scurt.	

Dimensiuni

F3 Terminal



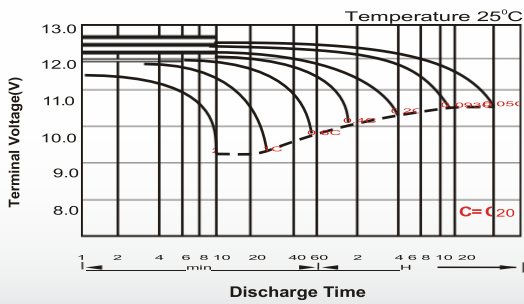
Descarcare la un current constant (Amperi) la 25°C

F.V/Time	10 min	15 min	20 min	30 min	45 min	1h	2h	3h	4h	5h	6h	8h	10h	20h
1.85V/cell	30.1	25.3	22.1	15.9	12.64	10.3	6.4	5	4.03	3.26	2.85	2.33	1.94	1.09
1.80V/cell	38.4	30.6	26.2	18.8	14.7	11.5	6.95	5.35	4.3	3.51	3.06	2.46	2.06	1.1
1.75V/cell	42.3	33.41	28.16	19.53	15.3	12.02	7.22	5.44	4.4	3.6	3.14	2.52	2.07	1.11
1.70V/cell	46.05	35.7	29.6	20.35	15.8	12.44	7.5	5.6	4.51	3.7	3.2	2.55	2.1	1.13
1.67V/cell	49.75	37.9	31.45	21.4	16.24	12.85	7.71	5.83	4.66	3.8	3.28	2.59	2.14	1.14
1.60V/cell	54	40.6	33.5	22.62	17	13.3	8	6	4.81	3.92	3.35	2.61	2.16	1.15

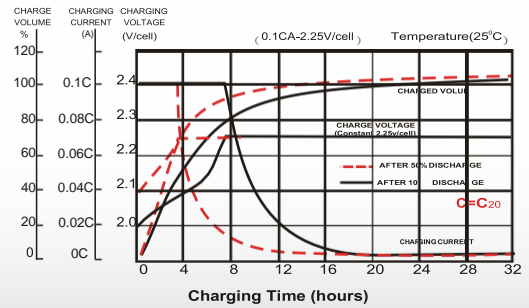
Descarcare la o putere constanta (Wati) la 20°C

F.V/ Time	10m in	15m in	20m in	30m in	45m in	1h	2h	3h	4h	5h	6h	8h	10h	20h
1.85W/cell	54.6	46.5	41.0	29.8	23.8	19.4	12.1	9.45	7.67	6.25	5.49	4.48	3.74	2.13
1.80W/cell	68.9	55.3	47.8	34.7	27.5	21.6	13.1	10.1	8.15	6.69	5.86	4.75	3.96	2.14
1.75W/cell	74.8	59.8	51.0	35.9	28.4	22.5	13.6	10.3	8.32	6.86	6.01	4.83	4.00	2.16
1.70W/cell	80.3	63.4	53.3	37.2	29.4	23.1	14.1	10.5	8.52	7.01	6.13	4.89	4.03	2.20
1.65W/cell	86.1	67.0	56.3	39.0	30.0	23.8	14.4	11.0	8.79	7.20	6.26	4.96	4.11	2.22
1.60W/cell	91.9	70.8	59.4	40.8	31.0	24.5	14.8	11.2	9.03	7.40	6.38	5.00	4.15	2.23

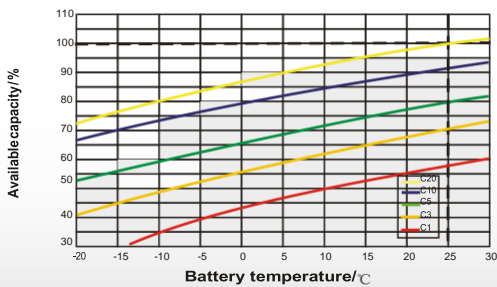
Caracteristici de descarcare



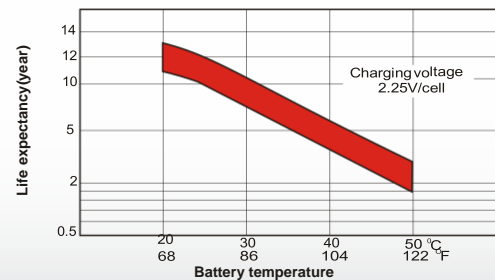
Caracteristici de incarcare



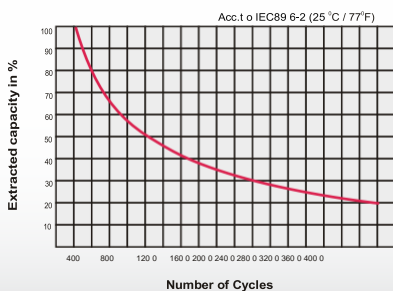
Efectul temperaturii in raport cu capacitatea bateriei



Efectul temperaturii pe termen lung in conditii de float



Durata de viata (cicli) in raport cu adancimea de descarcare



Raportul general intre capacitate si imp de depozitare

