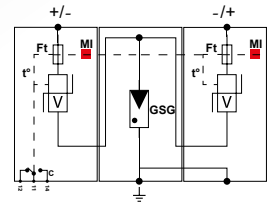
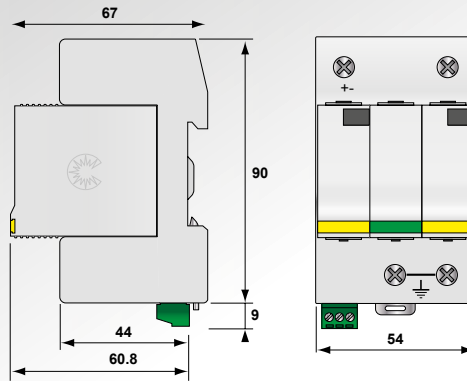


Type 1+2 PV Surge Protector DS50PV-880G/10KT1



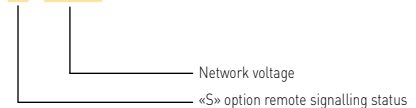
CITEL



GSG : Gas-filled spark gap
V : High energy MOV
Ft : Thermal fuse
t° : Thermal disconnection mechanism
C : Contact for remote signal
MI : Disconnection indicator

- Type 1+2 Surge Protector for Photovoltaic
- Impulse currents I_{imp}/I_{total} : 5/10kA @ 10/350 μ s
- Up to 880 Vdc (Uocstc)
- Common and Differential Modeprotection
- Remote Signaling (option)
- Plug-in module
- EN 50539-11 compliance

DS50PVS-880G/10KT1



Characteristics

CITEL model		DS50PV-880G/10KT1
Description		Type 1+2 PV surge protector
Network voltage	Uocstc	880 Vdc
Protection mode *		CM/DM
Max. operating voltage	Ucpv	1060 Vdc
Current withstand short-circuit	Iscpv	1000 A
Operating current - to the voltage Ucpv	Icpv	< 0.1 mA
Leakage current - to the voltage Ucpv	Ipe	none
Nominal discharge current - 15 x 8/20 μ s impulses	In	15 kA
Max discharge current by pole - max 8/20 μ s withstand «+(-) --> PE»	I _{max}	40 kA
Max. Lightning current by pole - 10/350 μ s withstand «+(-) --> PE»	I _{imp}	5 kA
Total lightning current - 10/350 μ s withstand «+(-) --> PE»	I _{total}	10 kA
Total Maximal discharge current - 8/20 μ s withstand «+(-) --> PE»	I _{total}	60 kA
Protection level CM/DM* (at In)	Up	2.9/3.6 kV
Disconnecter		
Thermal Disconnecter		internal
Mechanical characteristics		
Dimensions		see diagram
Connection		Screw terminal for 2.5-25 mm ² wire
Disconnection indicator		1 mechanical indicator by pole
Remote signaling		Option DS50PVS-880G/10KT1 - Output on changeover contact
Spare unit		DSM50PV-880G/10KT1 and DSM50PV-880GPE/10KT1
Mounting		symmetrical rail 35 mm (EN60715)
Operating temperature		-40/+85 °C
Protection class		IP20
Housing material		Thermoplastic UL94-V0
Standards compliance		EN50539-11
Part number		
DS50PV-880G/10KT1		consult us
DS50PVS-880G/10KT1		480293

*) CM = Common mode (+/PE or -/PE) - DM = Differential mode (+/-)

